

# RECREATION USE AND NEEDS STUDY PLAN

**PARR HYDROELECTRIC PROJECT  
(FERC No. 1894)**

*Prepared for:*

**South Carolina Electric & Gas Company  
Cayce, South Carolina**

*Prepared by:*

**Kleinschmidt**

Lexington, South Carolina  
[www.KleinschmidtUSA.com](http://www.KleinschmidtUSA.com)

January 2014  
*Revised October 2014*

RECREATION USE AND NEEDS  
STUDY PLAN

PARR HYDROELECTRIC PROJECT  
(FERC No. 1894)

*Prepared for:*

South Carolina Electric & Gas Company  
Cayce, South Carolina

*Prepared by:*

***Kleinschmidt***

Lexington, South Carolina  
[www.KleinschmidtUSA.com](http://www.KleinschmidtUSA.com)

January 2014  
*Revised October 2014*

# RECREATION USE AND NEEDS STUDY PLAN

## PARR HYDROELECTRIC PROJECT (FERC No. 1894)

### SOUTH CAROLINA ELECTRIC & GAS COMPANY

#### TABLE OF CONTENTS

1.0	INTRODUCTION .....	1
2.0	PURPOSE OF THE STUDY .....	1
3.0	STUDY AREA .....	3
4.0	STUDY SEASON.....	5
4.1	MONTICELLO RESERVOIR .....	6
4.2	PARR RESERVOIR.....	6
5.0	DATA COLLECTION METHODS .....	6
5.1	RECREATION SITE INVENTORY .....	9
5.2	TRAFFIC COUNTS .....	9
5.3	PUBLIC RECREATION AREA VISITOR EXIT INTERVIEWS.....	10
5.4	SPOT COUNTS .....	11
5.5	ADDITIONAL USER DATA COLLECTION EFFORTS .....	12
6.0	ANALYSIS.....	13
6.1	CURRENT RECREATION USE ESTIMATES.....	13
6.2	FUTURE RECREATION USE ESTIMATES .....	13
6.3	RECREATION SITE CAPACITY.....	14
6.4	RECREATION SITE USE DENSITY .....	14
6.5	RECREATION NEEDS ASSESSMENT.....	14
7.0	SCHEDULE.....	15
8.0	REFERENCES .....	15

#### LIST OF TABLES

TABLE 1	RECREATION SITES TO BE ASSESSED .....	3
TABLE 2	RECREATION USE AND NEEDS STUDY PLAN OBJECTIVES AND EFFORTS .....	7
TABLE 3	LIST OF HOLIDAYS TO BE INCLUDED IN THE 2015 RUNS EXIT INTERVIEW SAMPLING PLAN .....	11
FIGURE 1	MONTICELLO RESERVOIR RECREATION STUDY SITES .....	4
FIGURE 2	PARR RESERVOIR RECREATION STUDY SITES .....	5

TABLE OF CONTENTS (CONT'D)

APPENDICES

APPENDIX A – SITE INVENTORY FORM

APPENDIX B – RECREATION SITE QUESTIONNAIRES

J:\455\076\Docs\Study Plans\TWC Drafts\002-FINAL Parr Recreation Use and Needs Study Plan.docx

## **RECREATION USE AND NEEDS STUDY PLAN**

### **PARR HYDROELECTRIC PROJECT (FERC No. 1894)**

#### **SOUTH CAROLINA ELECTRIC & GAS COMPANY**

## **1.0 INTRODUCTION**

---

South Carolina Electric & Gas Company (SCE&G) is the Licensee of the Parr Hydroelectric Project (FERC No. 1894) (Project). The Project consists of the Parr Hydro Development and the Fairfield Pumped Storage Development. Both developments are located along the Broad River in Fairfield and Newberry Counties, South Carolina.

The Parr Hydro Development forms Parr Reservoir along the Broad River. The Development consists of a 37-foot-high, 200-foot-long concrete gravity spillway dam with a powerhouse housing generating units with a combined licensed capacity of 14.9 MW. Parr Hydro operates in a modified run-of-river mode and normally operates to continuously pass Broad River flow. The 13-mile-long Parr Reservoir has a surface area of 4,400 acres at full pool and serves as the lower reservoir for pumped-storage operations.

The Fairfield Pumped Storage Development is located directly off of the Broad River and forms the 6,800-acre upper reservoir, Monticello Reservoir, with four earthen dams. As noted, Parr Reservoir serves as the lower reservoir for pumped storage operations. The Fairfield Development has a licensed capacity of 511.2 MW and is primarily used for peaking operations, reserve generation, and power usage.

## **2.0 PURPOSE OF THE STUDY**

---

The Project is currently involved in a relicensing process which involves cooperation and collaboration between SCE&G, as licensee, and a variety of stakeholders including state and federal resource agencies, state and local government, non-governmental organizations (NGO), and interested individuals. The collaboration and cooperation is essential to the identification of and treatment of operational, economic, and environmental issues associated with a new

operating license for the Project. SCE&G has established several Technical Working Committees (TWC's) with members from among the interested stakeholders with the objective of achieving consensus regarding the identification and proper treatment of these issues in the context of a new license.

As a part of this process, SCE&G is proposing to perform an assessment of existing and future recreational use, opportunities, and needs for the Project. The assessment is designed to provide information pertinent to the current and future availability and adequacy of SCE&G owned and managed recreation sites and specific informal recreation areas at Monticello Reservoir and the Parr Reservoir. The overall study plan objective is to identify current and potential recreational use, opportunities, and needs at the Project by addressing the following goals and objectives:

Goal 1: *Characterize the existing recreational use of SCE&G's recreation sites on Monticello Reservoir and Parr Reservoir. This will be accomplished by meeting the following objectives:*

- i. Identify recreation points, inventory the services and facilities offered at each, and assess the general condition of each site (including whether the site provides barrier free access).
- ii. Identify the patterns of use at each site (type, volume, and daily patterns of use).

Goal 2: *Characterize existing use of waterfowl areas (Broad River Waterfowl Area, Enoree River Waterfowl area) and SCE&G recreation lands by hunters during designated hunting seasons. This will be accomplished by meeting the following objectives:*

- i. Identify the patterns of use within the Project boundary (type, volume, and daily/seasonal patterns of use).

Goal 3: *Identify future recreational needs relating to public recreation sites on Monticello Reservoir and Parr Reservoir. This will be accomplished by meeting the following objectives:*

- i. Identify existing user needs and preferences, including perceptions of crowding at recreation sites.
- ii. Estimate future recreational use of existing recreation sites.
- iii. Identify future needs for new recreation sites and facilities.

### 3.0 STUDY AREA

---

SCE&G designated recreation sites and informal recreation areas on Monticello Reservoir (Figure 1 ) and Parr Reservoir (Figure 2 ) that will be included in this assessment include the following:

**TABLE 1 RECREATION SITES TO BE ASSESSED**

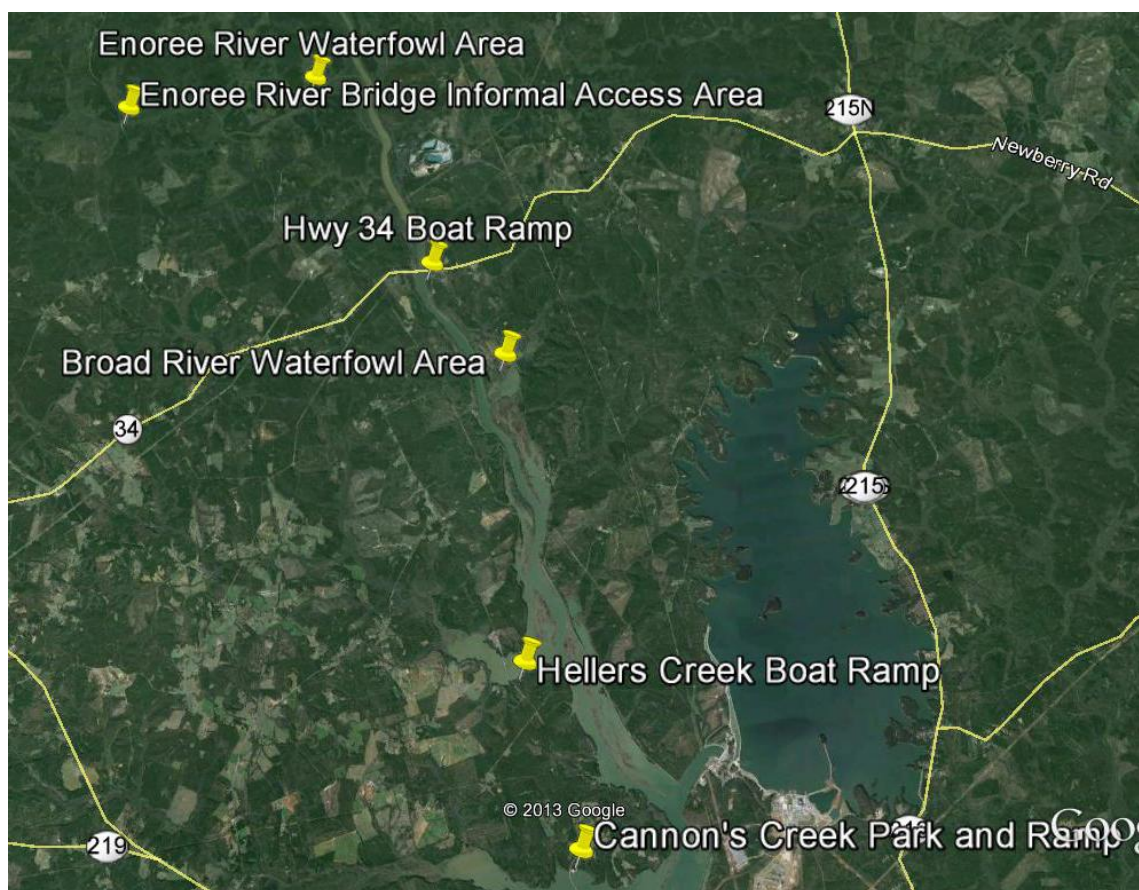
<b>MONTICELLO RESERVOIR RECREATION SITES &amp; INFORMAL AREAS</b>		<b>PARR RESERVOIR RECREATION SITES &amp; INFORMAL AREAS</b>	
1.	Scenic Overlook (SCE&G-maintained portion)	1.	Cannon's Creek Boat Ramp
2.	Hwy 215 Boat Ramp	2.	Heller's Creek Boat Ramp
3.	Hwy 99 Boat Ramp	3.	Broad River Waterfowl Area (vehicle counter only)
4.	Recreation Lake Access Area	4.	Hwy 34 Boat Ramp (vehicle counter only)
5.	Informal fishing area, east side of Hwy 99	5.	Enoree River Waterfowl Area (vehicle counter only)
		6.	Enoree River Bridge Informal Access Area (vehicle counter only)

---



**FIGURE 1 MONTICELLO RESERVOIR RECREATION STUDY SITES**





**FIGURE 2 PARR RESERVOIR RECREATION STUDY SITES**

#### **4.0 STUDY SEASON**

---

Study seasons will vary by study area based upon current knowledge of use patterns. Study seasons should capture specific seasonal activities, including hunting during legal seasons and on-water recreational use during the peak season (typically defined as Memorial Day to Labor Day). As hunting season dates vary annually based upon SCDNR board decisions, only approximate date ranges for specific targeted mail-in survey activities are provided within this study plan. Exact dates for waterfowl survey activities will be determined when study season dates are published, anticipated being mid-summer 2014. Study season specifics are further described below.

#### **4.1 MONTICELLO RESERVOIR**

Primary interview activities will occur from April 1 through Labor Day, 2015. Additional interviews will be conducted from February 1 through March 31, 2016 in order to capture recreational activity on the Reservoir during early crappie season. Specific targeted survey activities with mail-in surveys, as described in Section 5.5, will occur during the Canada Geese hunting season (approximately September 1 through September 30, depending on yearly SCDNR approved seasons).

#### **4.2 PARR RESERVOIR**

Primary interview activities, as described in Section 5.0, will occur from April 1 through Labor Day, 2015, to encompass turkey hunting season, as well as the peak recreation season. Specific targeted survey activities with mail-in surveys, as described in Section 5.5, will occur during Migratory Waterfowl Seasons, including Canada Geese hunting season (approximately September 2015 through January 2016, depending on yearly SCDNR approved seasons).

### **5.0 DATA COLLECTION METHODS**

---

A variety of data collection techniques will be used to obtain the information necessary to meet the study objectives. Table 2 identifies the information needed to address each objective and the data collection methods to be used. Both primary and secondary data will be utilized. Primary data will entail site inventories, user counts, and use surveys (exit interviews). Secondary data will include U.S. Bureau of Census data, the South Carolina Statewide Comprehensive Outdoor Recreation Plan (SCORP), SC Recreation Participation & Preference Study, and other relevant, readily available literature. Additional input will be solicited from the Lake & Land Management and Recreation Resource Conservation Group (RCG), Recreation TWC, and target "focus groups" of especially knowledgeable individuals, offering knowledge of the recreation resources and needs of the lake and river.

**TABLE 2 RECREATION USE AND NEEDS STUDY PLAN OBJECTIVES AND EFFORTS**

OBJECTIVES	INFORMATION NEEDED	SOURCE
<i>Goal 1: Characterize existing recreational use of recreation sites on Monticello Reservoir and the Parr Reservoir</i>		
Identify formal recreation sites, inventory the services and facilities offered at each, and assess the general condition and ADA compliance of each site	<ul style="list-style-type: none"> <li>• Physical inventory of all boat ramps, grills, shelters, restrooms, parking capacity, etc., at each site</li> <li>• General assessment of site condition to include maintenance, basic rehabilitation needs, etc.</li> <li>• Visitors' assessment of site conditions</li> <li>• Identification of activities that occur at each site</li> <li>• ADA compliance assessment</li> </ul>	<ul style="list-style-type: none"> <li>• Recreation Site Inventory</li> <li>• Survey of Recreation Site Users</li> </ul>
Identify the patterns of use at each site (type, volume, and daily patterns of use)	<ul style="list-style-type: none"> <li>• Utilize vehicle counts as an estimation of people</li> <li>• Estimate of # people/vehicle</li> <li>• Estimate of # vehicles/site</li> <li>• Parking capacity</li> </ul>	<ul style="list-style-type: none"> <li>• Traffic Counter Data</li> <li>• Surveyor Counts of Vehicles at Recreation Sites</li> <li>• Survey of Recreation Site Users - # of people per vehicle and length of visit</li> <li>• Recreation Site Inventory - # of parking spaces</li> <li>• County data from Scenic Overlook</li> </ul>

OBJECTIVES	INFORMATION NEEDED	SOURCE
<i>Goal 2: Characterize existing use of waterfowl areas (Broad River Waterfowl Area, Enoree River Waterfowl area) and SCE&amp;G recreation lands by hunters during designated hunting seasons.</i>		
Identify the patterns of use within the Project boundary (type, volume, and daily/seasonal patterns of use).	<ul style="list-style-type: none"> <li>• Estimation of # hunters/site or waterfowl area</li> </ul>	<ul style="list-style-type: none"> <li>• Counts of Vehicles at Recreation Sites/waterfowl areas</li> <li>• Mail-in questionnaire specific to hunting use at the Project</li> <li>• SCDNR waterfowl use data</li> <li>• SCDNR hunting permit data</li> </ul>

OBJECTIVES	INFORMATION NEEDED	SOURCE
<i>Goal 3: Identify future recreational needs relating to public recreation sites on Monticello Reservoir and Parr Reservoir</i>		
Identify existing user needs and preferences, including perceptions of crowding at recreation sites	<ul style="list-style-type: none"> <li>• User preferences and opinions of needs and crowding at sites</li> <li>• Condition assessment</li> </ul>	<ul style="list-style-type: none"> <li>• Survey of Recreation Site Users</li> <li>• Recreation Site Inventory</li> </ul>
Estimate future recreational use of existing recreation sites	<ul style="list-style-type: none"> <li>• Current inventory and use data from Goals 1 and 2</li> <li>• Population projections for the project area</li> <li>• Recreational use trends</li> </ul>	<ul style="list-style-type: none"> <li>• Results of Goals 1 and 2</li> <li>• U.S. Bureau of Census Data</li> <li>• SC Division of Research &amp; Statistics (Budget and Control Board)</li> <li>• SCORP, SC Recreation Participation &amp; Preference Study, or other readily available literature</li> </ul>
Identify future needs for new recreation sites and facilities	<ul style="list-style-type: none"> <li>• Population projections</li> <li>• Recreation use trends</li> <li>• "focus group" (stakeholders) knowledge of recreation resources and needs</li> </ul>	<ul style="list-style-type: none"> <li>• SC Div. of Research &amp; Statistics</li> <li>• SCORP, SC Recreation Participation &amp; Preference Study, Palmetto Conservation Foundation trail use data, or other literature</li> <li>• Recreation TWC and Lake and Land Management &amp; Recreation RCG</li> </ul>

The capacity, availability, and overall condition of existing recreation sites will be assessed through review of existing information and an on-site inventory (Section 5.1). Recreational use of SCE&G's public recreation sites (Table 2) during the appropriate recreation season (as described in 4.0) will be estimated using a combination of data including traffic count, survey data, spot counts, and additional collection methods as described in Section 5.2, 5.3, 5.4, and 5.5. Methods for estimating recreational use are described in Section 6.0.

## **5.1 RECREATION SITE INVENTORY**

Data on the types of amenities, activities supported, and the parking capacity of recreation sites at the Project, and the land area each site encompasses will be obtained from two sources. First, existing information regarding recreation sites such as FERC Form 80's and existing GIS data layers will be referenced. Second, a site visit will be made to collect data on the type, number, and size of facilities (restrooms, parking areas, boat ramps, picnic shelters and tables, etc.) located at each site. The general condition of recreation facilities will be recorded along with a qualitative assessment of whether the site is considered "barrier free". A copy of the inventory form is provided in Appendix A.

Upon completion of the inventory, all data will be uploaded into a database; anticipated to be a GIS database. The database will be structured so that it can be used in a variety of formats (brochure, maps, web pages, etc.) and can be updated as recreation sites are modified, added, or changed in any way.

## **5.2 TRAFFIC COUNTS**

Traffic counters will be installed to record the number of vehicles that enter and exit the public recreation areas. Traffic count data will be collected for an entire year in order to capture the various hunting seasons. On Monticello Reservoir, traffic counters will be installed at the lake access point of the Scenic Overlook, the Hwy 215 Boat Ramp, the Hwy 99 Boat Ramp, Recreation Lake Access Area, and the Hwy 99 informal fishing area. At Parr Reservoir, traffic counters will be installed at Cannon's Creek Boat Ramp, Heller's Creek Boat Ramp, Broad River Waterfowl Area, Hwy 34 Boat Ramp, Enoree River Waterfowl Area, and the Enoree River Bridge informal area.

### 5.3 PUBLIC RECREATION AREA VISITOR EXIT INTERVIEWS

The preferences and perceptions of people using SCE&G's recreation sites and informal areas are important inputs in management decisions regarding the adequacy and availability of existing recreation sites. Information from recreation site users will be obtained via an onsite survey from April 1 through Labor Day, 2015, and from February 1 through March 31, 2016, on Monticello Reservoir and from April 1 through Labor Day, 2015, for Parr Reservoir.

Exit surveys will be administered to collect user characteristics (origin, gender, age, group size, etc.), the type of land-based and water-based recreation activities individuals are participating in, length of stay, perceptions of crowdedness, and conditions of recreation sites at the Project. Visitor demographic information will also be collected. Surveys will be conducted at the following locations:

#### Monticello Reservoir

- Scenic Overlook
- Hwy 215 Boat Ramp
- Hwy 99 Boat Ramp
- Recreation Lake Access Area
- Hwy 99 informal Fishing Area

#### Parr Reservoir

- Cannon's Creek Boat Ramp
- Heller's Creek Boat Ramp

The data collected will be used to provide a general pattern of recreation use and assist in the development of recreation use estimates at access sites. The data will also provide recreation user inputs on "crowdedness" and potential facility needs. The survey will be pre-tested in the field prior to implementation and revisions will be incorporated, as necessary. If any significant revisions to the survey or study protocol are deemed necessary subsequent to field pre-testing, the TWC will be notified.

Two survey versions will be implemented – one for Monticello Reservoir and one for Parr Reservoir. The two survey versions will be very similar to each other and will contain similar questions. Draft questionnaires are provided in Appendix B.

A draft sampling plan (Appendix C) has been prepared in consultation with the TWC utilizing stratified random sampling in order to complete at least 30 days of interviewing at each recreation site. Sampling days are made up of weekends, weekdays and holidays. Weekends will be sampled at a greater rate than weekdays, to account for the heavier use that typically occurs during those periods. Moreover, all major national holidays that fall within the recreation season have been included in the sampling plan (i.e., Memorial Day weekend, July 4th weekend, and Labor Day weekend)(Table 3). Furthermore, as the sampling season approaches, the TWC will be consulted on the potential for including special event days with the holidays.

**TABLE 3 LIST OF HOLIDAYS TO BE INCLUDED IN THE 2015 RUNS EXIT INTERVIEW SAMPLING PLAN**

<b>DATE</b>	<b>HOLIDAY</b>
May 23, 2015	Saturday before Memorial Day
May 24, 2015	Sunday before Memorial Day
May 25, 2015	Memorial Day
July 3, 2015	Friday before Independence Day
July 4, 2015	Independence Day
July 5, 2015	Sunday after Independence Day
September 5, 2015	Saturday before Labor Day
September 6, 2015	Sunday before Labor Day
September 7, 2015	Labor Day

All survey clerks will be trained thoroughly as a means of quality control. Survey clerks will be provided with detailed information on the study schedule, appropriate materials to aid in data collection, and direction on appropriate interviewing techniques and attire. Interviewers will also be provided with an incentive for survey respondents to complete the survey.

#### **5.4 SPOT COUNTS**

Spot counts will be conducted at the public recreation sites identified in Section 5.3 once per interview period, concurrent with exit interviews. Specifically, spot counts will document the number of visitors and/or vehicles present at that visit and help to characterize site use.

Information recorded during spot counts will include: date, time, and weather; amount of vehicle and vehicle/trailer parking capacity in use; number and type of activities observed at the site; and state license plate data. Spot count data will be used in parallel with traffic counter data.

## 5.5 ADDITIONAL USER DATA COLLECTION EFFORTS

Waterfowl hunting typically occurs during the fall and winter months. Waterfowl hunters represent a unique group of users whose preferences and perceptions may differ from those using recreation sites during the summer months. The preferences and perceptions of waterfowl hunters will be identified through use of a panel of waterfowl hunters.

Kleinschmidt will work with the Recreation TWC to identify waterfowl organizations whose hunters use the Project. A panel will be assembled from willing participants of the respective organizations. Should not enough participants be available from the organizations, additional individual hunters may be sought out to serve on the panel. A small group of hunters will be invited to participate in a group meeting, similar to a focus group, to identify the opportunities and needs of waterfowl hunters using Project access areas. The information collected will be similar to that of the access site survey. Kleinschmidt will recruit the hunters, develop a meeting format and materials, and will conduct the meeting. It is anticipated that the meeting will occur during the waterfowl hunting season.

Additionally, mail-in surveys similar to the access site survey will be distributed at the Broad River<sup>1</sup> and Enoree River Waterfowl Areas, on Parr Reservoir during waterfowl hunting season. On Monticello Reservoir, mail-in surveys will be distributed on vehicles parked at the Hwy 215 boat ramp and the Hwy 99 boat ramp during Canada Geese season. The study seasons for Monticello Reservoir and Parr Reservoir, as discussed in Section 4.0, will capture the turkey hunting season through exit interview activities.

Representation of those utilizing the Project during local fishing tournaments are anticipated to be represented during access site exit interviews, as registration, check-in and weigh-in typically occurs at access areas.

---

<sup>1</sup> In lieu of distributing mail-in surveys on parked vehicles at the Broad River Waterfowl Area, mail-in surveys may be provided to SCDNR to distribute to hunters winning the opportunity to hunt at this site through the SCDNR Public Lottery Hunt program.



## **6.0 ANALYSIS**

---

The following sections provide a description of the approach for estimating existing and future recreational use, recreation site capacity and use density percentages, and recreation needs.

### **6.1 CURRENT RECREATION USE ESTIMATES**

The reported estimates of recreation will be presented in "recreation days". The FERC defines a recreation day as one visit by a person to a development for purposes of recreation during any 24-hour period. The weekday, weekend, and holiday average recreation days will be calculated for each Monticello Reservoir and Parr Reservoir recreation site utilizing the traffic counters and recreation site survey data. The average number of people at each site within the morning and afternoon periods will be estimated within each day type and converted to a daily estimate. Daily estimates for each day type will be expanded to represent the study period and summed for a total estimate for each recreation site.

### **6.2 FUTURE RECREATION USE ESTIMATES**

Estimated projections of future recreation use at Monticello Reservoir and Parr Reservoir will be developed using the average annual increase in population growth over the past 10 years, as reported by the Census Bureau or the State Division of Research and Statistics, for Newberry, Fairfield and Richland counties<sup>2</sup>. The estimates will be augmented with discussion of trends reported in the SCORP (2014) and the SC Recreation Participation & Preference Study (2005). Estimated projections will be provided in 5 year intervals for the anticipated term of the license up to 50 years into the future (through year 2070).

While it is acknowledged that future changes in the supply of recreation resources, either in their quantity, accessibility, and/or quality may influence future demand and use, the demand analysis undertaken for this study does not attempt to predict what these future changes might consist of or how they might specifically affect levels of use at Project facilities. Therefore, the demand analysis results should be viewed as a general guide of potential future recreation pressure developed for planning purposes only.

---

<sup>2</sup> Although Richland County is not within the FERC Project boundary, it is believed that a significant number of those who recreate at the Project reside within Richland County.

### **6.3 RECREATION SITE CAPACITY**

For purposes of this study, the carrying capacity for a recreation site is defined as the number of vehicles and boat trailers that can be parked at a recreation site at one time, based on the number of available parking spaces associated with each site. For paved parking areas, this will be achieved by counting the number of designated parking spaces available at the recreation site. For gravel parking areas, the number of available parking spaces for each recreation site will be estimated by measuring the area (sq ft) available for parking and estimating the number of vehicles that could be parked at the location, if optimal space were utilized. These estimates will be based on parking capacity standards for vehicle length, width, and available turn around space.

### **6.4 RECREATION SITE USE DENSITY**

The use density of recreation sites will be estimated by comparing the average observed number of vehicles at the sites on sampled weekday, weekend, and holiday days with the available parking capacity for each recreation site. The average observed number of vehicles divided by the parking capacity will provide an estimated use density for each site.

### **6.5 RECREATION NEEDS ASSESSMENT**

The need for recreation and site development or modification of existing recreation resources will be assessed based on the inventory, condition, capacity, and exit interview survey results. The needs assessment will focus on the existing condition and user opinions of recreation sites, whether a particular site provides "barrier free" access, and the ability of sites to meet current and anticipated future recreation demand pressures. Consideration will also be given to site opportunities and constraints, as well as support facilities such as signage and maintenance. The need for new recreational sites, facilities, and shoreline will be determined through assessment of the information collected and the input of stakeholders on the Recreation TWC and Lake & Land Management RCG.

## 7.0 SCHEDULE

---

The proposed schedule for completion of the Recreation Use and Needs Study is as follows:

---

TASK	DATE
Mobilization for field work (includes field clerk hiring, training, etc.)	March 2015
Survey development and pre-testing	March 2015
Installation of Traffic Counters	March 31, 2015
Interview survey collection (Monticello Reservoir)	April 1-September 7 (Labor Day, 2015); and February 1 - March 31, 2016 <sup>3</sup>
Interview survey collection (Parr Reservoir)	April 1 -September 7 (Labor Day, 2015)
Waterfowl survey activities	Throughout 2015 and early 2016 during appropriate seasons.
Early data entry, cleaning, and processing	Early October 2015
Determine if additional data collection is needed	December 2015 <sup>4</sup>
Conduct analyses	April - July 2016
Submit draft report	July 2016
Finalize report	July/August 2016

---

## 8.0 REFERENCES

---

South Carolina Department of Parks, Recreation and Tourism, Recreation, Planning and Engineering Office. 2008. South Carolina Statewide Comprehensive Outdoor Recreation Plan.

University of South Carolina. 2005. South Carolina Recreation Participation & Preference Study. Prepared for the South Carolina Department of Parks, Recreation and Tourism. (Online) [URL]: <http://www.scprt.com/files/RPE/2005%20Rec%20Study.pdf>

---

<sup>3</sup> The recreation season has been extended into 2016 on Monticello Reservoir in order to capture use data during the early crappie season, from February 1 through March 31, 2016.

<sup>4</sup> If additional data collection is required, data collection methods, results and analyses, developed and assessed in cooperation with the Recreation RCG, will be provided in an addendum to the report.

**APPENDIX A**

**SITE INVENTORY FORM**

**SOUTH CAROLINA ELECTRIC & GAS COMPANY**

**RECREATION ASSESSMENT STUDY PLAN**

**PARR HYDROELECTRIC PROJECT  
(FERC NO. 1894)**

**SCE&G Public Site Inventory Form**

Inspected by: \_\_\_\_\_

Date: \_\_\_\_\_

Site Name: \_\_\_\_\_

Site Address: \_\_\_\_\_

City: \_\_\_\_\_ State: SC Zip Code: \_\_\_\_\_

---

---

**Facility Type:**

\_\_\_\_ Primitive Camp                      \_\_\_\_ Picnic Area                      \_\_\_\_ Day Use  
\_\_\_\_ Overlook Site                      \_\_\_\_ Informal Site                      \_\_\_\_ Launch Ramp

---

---

**Road Access:**

\_\_\_\_ Paved access..... # of lanes  
\_\_\_\_ Unpaved access..... # of lanes – (Circular entrance/exit)

---

---

**Operations:**

\_\_\_\_ Manned                      \_\_\_\_ Seasonal      (From \_\_\_\_ To \_\_\_\_)  
\_\_\_\_ Unmanned                      \_\_\_\_ Year Round  
\_\_\_\_ Fee (\$) ..... (Site \_\_\_\_; Parking; \_\_\_\_)

**Site Amenities:**

#	Type	#	Type
_____	Picnic Tables	_____	Potable Water
_____	Grills	_____	Boat Fuel
_____	Firepit/ring	_____	Trash Cans
_____	Boat Pump Out	_____	Docks
_____	Trails (specify use _____: Miles_____)	_____	Playground
_____	Shelter	_____	Showers
_____	Designated Swim Area	_____	Concession
_____	Store	_____	Marina (# of slips_____)
_____	Dumping Station		

**Parking Lots:**

Type	Estimated # Paved	Estimated # Gravel	
ADA Spaces	_____	_____	_____ Spaces delineated?
Regular Spaces	_____	_____	_____ Curbs?
Vehicle & trailer spaces	_____	_____	

**Sanitation Facilities:**

	Flush	(BF*?)	Portable	(BF?)	Showers	(BF?)
Unisex	_____	(_____)	_____	(_____)	_____	(_____)
Women	_____	(_____)	_____	(_____)	_____	(_____)
Men	_____	(_____)	_____	(_____)	_____	(_____)

*\*BF - Barrier Free*

**Campground/Campsite:**

	RV sites	Cabins	Tent sites	Primitive sites
# of sites	_____	_____	_____	_____
On site parking	_____	_____	_____	_____
Water front	_____	_____	_____	_____
Barrier Free	_____	_____	_____	_____



**APPENDIX B**

**RECREATION SITE QUESTIONNAIRES**



## Monticello Reservoir Public Access Site Questionnaire

Clerk: _____	Site: _____	Date: _____	Time: _____ am/pm
Weather: <input type="checkbox"/> Sunny	<input type="checkbox"/> Partly Cloudy	<input type="checkbox"/> Cloudy	<input type="checkbox"/> Light Rain <input type="checkbox"/> Heavy Rain
RESPONDENT GENDER: <input type="checkbox"/> Male <input type="checkbox"/> Female	RESPONDENT REFUSED INTERVIEW: <input type="checkbox"/>		
NUMBER OF PEOPLE IN VEHICLE: _____	RESPONDENT DOES NOT SPEAK ENGLISH: <input type="checkbox"/>		
VEHICLE HAS A BOAT TRAILER: <input type="checkbox"/>	RESPONDENT IS NOT 18 YEARS OR OLDER: <input type="checkbox"/>		
RESPONDENT HAS BEEN INTERVIEWED AT THIS SITE PREVIOUSLY: <input type="checkbox"/>			

### THE FIRST FEW QUESTIONS ASK ABOUT YOUR EXPERIENCE HERE TODAY

1. Including yourself, how many people are in your party today? *(Fill in blank.)*  
       \_\_\_\_\_ people in party
  
2. What time did you arrive **at Monticello Reservoir** today? *(Fill in blank.)*  
       \_\_\_\_\_ am / pm
  
3. What is the primary recreation activity that you participated in today **at Monticello Reservoir**? *(Please read the list to respondents. Check only one main activity in the first column.)*

What other activities did you participate in today **at Monticello Reservoir**? *(Check all that apply in the second column.)*

<i>Check only one main activity</i>	<i>Check all other activities</i>	<i>Types of Activities</i>
		<i>FISHING:</i>
<input type="checkbox"/>	<input type="checkbox"/>	<b>boat fishing</b>
<input type="checkbox"/>	<input type="checkbox"/>	<b>pier/dock fishing</b>
<input type="checkbox"/>	<input type="checkbox"/>	<b>bank fishing</b>
		<i>BOATING:</i>
<input type="checkbox"/>	<input type="checkbox"/>	<b>motor boating</b>
<input type="checkbox"/>	<input type="checkbox"/>	<b>pontoon/party boating</b>
<input type="checkbox"/>	<input type="checkbox"/>	<b>sailing</b>
<input type="checkbox"/>	<input type="checkbox"/>	<b>canoeing/kayaking</b>
<input type="checkbox"/>	<input type="checkbox"/>	<b>windsurfing</b>
<input type="checkbox"/>	<input type="checkbox"/>	<b>paddleboarding</b>
		<i>OTHER:</i>
<input type="checkbox"/>	<input type="checkbox"/>	<b>bicycling</b>
<input type="checkbox"/>	<input type="checkbox"/>	<b>tent or vehicle camping</b>
<input type="checkbox"/>	<input type="checkbox"/>	<b>horseback riding</b>
<input type="checkbox"/>	<input type="checkbox"/>	<b>walking/hiking/backpacking</b>
<input type="checkbox"/>	<input type="checkbox"/>	<b>sightseeing</b>
<input type="checkbox"/>	<input type="checkbox"/>	<b>hunting</b>
<input type="checkbox"/>	<input type="checkbox"/>	<b>nature study/wildlife viewing/photography</b>
<input type="checkbox"/>	<input type="checkbox"/>	<b>swimming</b>
<input type="checkbox"/>	<input type="checkbox"/>	<b>picnicking</b>
<input type="checkbox"/>	<input type="checkbox"/>	<b>sunbathing</b>
<input type="checkbox"/>	<input type="checkbox"/>	<b>other: _____</b>

<i>Check only <u>one</u> main activity</i>	<i>Check all other activities</i>	<i>Types of Activities</i>
	<input type="checkbox"/>	<b>None</b>

4. Did you spend any time **on the water on Monticello Reservoir** today? (Check one box.)

- YES  
 NO (If no, skip to Question 6.)

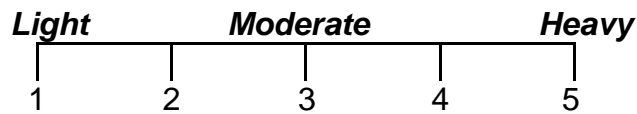
5A. Did you recreate on any of the **islands on Monticello Reservoir** today?

- YES  
 NO (If no, skip to Question 6.)

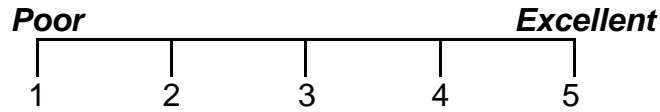
5B. What activities did you participate in **while on the island(s)**? (Do not read this list. Allow respondent to answer and check all that apply and/or fill in the blanks.)

<input type="checkbox"/> sunbathing	<input type="checkbox"/> bank fishing	<input type="checkbox"/> hunting
<input type="checkbox"/> camping	<input type="checkbox"/> walking/hiking	<input type="checkbox"/> sightseeing
<input type="checkbox"/> nature study/wildlife viewing/photography	<input type="checkbox"/> swimming	<input type="checkbox"/> picnicking
<input type="checkbox"/> other (please specify: _____)		

6. On a scale from 1 to 5, with 1 being light, 3 being moderate, and 5 being heavy, how would you rate the crowdedness **at this recreation site** today? (Circle one number.)



7A. On a scale from 1 to 5, with 1 being poor and 5 being excellent, how would you rate the overall condition **of this recreation site** today? (Circle one number.)



7B. Why did you choose to come to **this recreation site** today? (Fill in the blank.)

---



---



---



---

7C. Are there any additional facilities needed **at this recreation site**? (Check one box.)

- YES
- NO (If no, skip to Question 8.)

7D. What do you recommend? (Do not read this list. Allow respondent to answer and check all that apply and/or fill in the blanks.)

<input type="checkbox"/> access road	<input type="checkbox"/> bank fishing area	<input type="checkbox"/> boat dock
<input type="checkbox"/> boat launch	<input type="checkbox"/> camping area	<input type="checkbox"/> fish cleaning station
<input type="checkbox"/> fishing pier/dock	<input type="checkbox"/> lighting	<input type="checkbox"/> parking lot
<input type="checkbox"/> picnic tables/shelter	<input type="checkbox"/> restrooms	<input type="checkbox"/> signs & information
<input type="checkbox"/> swimming area	<input type="checkbox"/> trails	<input type="checkbox"/> trash cans
<input type="checkbox"/> RV camping	<input type="checkbox"/> tent camping	<input type="checkbox"/> bilingual signs & information
<input type="checkbox"/> other (please specify: _____)		

7E. Are there any other improvements that you would recommend for this site?

- YES
- NO (If no, skip to Question 8.)

7F. What improvements do you recommend? *(Fill in the blank.)*

---

---

---

---

8. What was your primary reason for choosing to recreate **at Monticello Reservoir** today versus another lake or area? *(Fill in blank.)*

---

---

---

9. What **other lakes** do you recreate at? *(Fill in blank.)*

---

---

---

---

**I HAVE JUST A FEW MORE QUESTIONS**

10. Do you own a permanent or seasonal lakefront residence **on Monticello Reservoir**? What is your zip code? *(Check one box and fill in the blank for zip code.)*

- YES – Permanent Home → ZIP CODE: \_\_\_\_\_
- YES – Seasonal Home → ZIP CODE: \_\_\_\_\_
- NO - Non-lakefront resident → ZIP CODE: \_\_\_\_\_

11. In what year were you born? *(Fill in blank.)*

\_\_\_\_\_ YEAR

12. Do you have any additional comments about the recreation facilities at **Monticello Reservoir**? *(Please fill in blank and be as specific as possible.)*

---

---

---

---

---

---

**THANK YOU FOR YOUR HELP! WE APPRECIATE YOUR TIME TODAY!**

## Parr Reservoir/Broad River Public Access Site Questionnaire

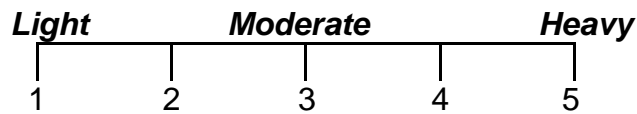
Clerk: _____	Site: _____	Date: _____	Time: _____ am/pm
Weather: <input type="checkbox"/> Sunny	<input type="checkbox"/> Partly Cloudy	<input type="checkbox"/> Cloudy	<input type="checkbox"/> Light Rain <input type="checkbox"/> Heavy Rain
RESPONDENT GENDER: <input type="checkbox"/> Male <input type="checkbox"/> Female	RESPONDENT REFUSED INTERVIEW: <input type="checkbox"/>		
NUMBER OF PEOPLE IN VEHICLE: _____	RESPONDENT DOES NOT SPEAK ENGLISH: <input type="checkbox"/>		
VEHICLE HAS A BOAT TRAILER: <input type="checkbox"/>	RESPONDENT IS NOT 18 YEARS OR OLDER: <input type="checkbox"/>		
RESPONDENT HAS BEEN INTERVIEWED AT THIS SITE PREVIOUSLY: <input type="checkbox"/>			

### THE FIRST FEW QUESTIONS ASK ABOUT YOUR EXPERIENCE HERE TODAY

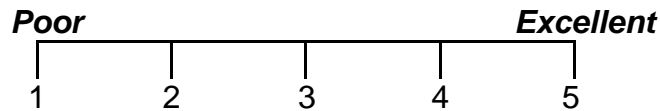
1. Including yourself, how many people are in your party today? *(Fill in blank.)*  
       \_\_\_\_\_ people in party
  
2. What time did you arrive **at Parr Reservoir** today? *(Fill in blank.)*  
       \_\_\_\_\_ am / pm
  
3. What is the primary recreation activity that you participated in today **at Parr Reservoir**?  
*(Please read the list to respondents. Check only one main activity in the first column.)*  
 What other activities did you participate in today **at Parr Reservoir**? *(Check all that apply in the second column.)*

<i>Check only one main activity</i>	<i>Check all other activities</i>	<i>Types of Activities</i>
		<b>FISHING:</b>
<input type="checkbox"/>	<input type="checkbox"/>	<b>boat fishing</b>
<input type="checkbox"/>	<input type="checkbox"/>	<b>pier/dock fishing</b>
<input type="checkbox"/>	<input type="checkbox"/>	<b>bank fishing</b>
		<b>BOATING:</b>
<input type="checkbox"/>	<input type="checkbox"/>	<b>motor boating</b>
<input type="checkbox"/>	<input type="checkbox"/>	<b>canoeing/kayaking</b>
		<b>OTHER:</b>
<input type="checkbox"/>	<input type="checkbox"/>	<b>tent or vehicle camping</b>
<input type="checkbox"/>	<input type="checkbox"/>	<b>horseback riding</b>
<input type="checkbox"/>	<input type="checkbox"/>	<b>walking/hiking/backpacking</b>
<input type="checkbox"/>	<input type="checkbox"/>	<b>Sightseeing</b>
<input type="checkbox"/>	<input type="checkbox"/>	<b>Hunting</b>
<input type="checkbox"/>	<input type="checkbox"/>	<b>nature study/wildlife viewing/photography</b>
<input type="checkbox"/>	<input type="checkbox"/>	<b>Swimming</b>
<input type="checkbox"/>	<input type="checkbox"/>	<b>Picnicking</b>
<input type="checkbox"/>	<input type="checkbox"/>	<b>Sunbathing</b>
<input type="checkbox"/>	<input type="checkbox"/>	<b>other: _____</b>
	<input type="checkbox"/>	<b>None</b>

4. On a scale from 1 to 5, with 1 being light, 3 being moderate, and 5 being heavy, how would you rate the crowdedness **at this recreation site** today? (Circle one number.)



- 5A. On a scale from 1 to 5, with 1 being poor and 5 being excellent, how would you rate the overall condition **of this recreation site** today? (Circle one number.)



- 5B. Why did you choose to come to **this recreation site** today? (Fill in the blank.)

---



---



---



---

- 5C. Are there any additional facilities needed **at this recreation site**? (Check one box.)

- YES  
 NO (If no, skip to Question 6.)

- 5D. What do you recommend? (Do not read this list. Allow respondent to answer and check all that apply and/or fill in the blanks.)

<input type="checkbox"/> access road	<input type="checkbox"/> bank fishing area	<input type="checkbox"/> boat dock
<input type="checkbox"/> boat launch	<input type="checkbox"/> camping area	<input type="checkbox"/> fish cleaning station
<input type="checkbox"/> fishing pier/dock	<input type="checkbox"/> lighting	<input type="checkbox"/> parking lot
<input type="checkbox"/> picnic tables/shelter	<input type="checkbox"/> restrooms	<input type="checkbox"/> signs & information
<input type="checkbox"/> swimming area	<input type="checkbox"/> trails	<input type="checkbox"/> trash cans
<input type="checkbox"/> RV camping	<input type="checkbox"/> tent camping	<input type="checkbox"/> bilingual signs & information
<input type="checkbox"/> other (please specify: _____)		

- 5E. Are there any other improvements that you would recommend for this site?

- YES  
 NO (If no, skip to Question 6.)

5F. What improvements do you recommend? *(Fill in the blank.)*

---

---

---

---

**I HAVE JUST A FEW MORE QUESTIONS**

6. Do you own a permanent or seasonal residence **on the Broad River**? What is your zip code? *(Check one box and fill in the blank for zip code.)*

- YES – Permanent Home → ZIP CODE: \_\_\_\_\_
- YES – Seasonal Home → ZIP CODE: \_\_\_\_\_
- NO - Non-lakefront resident → ZIP CODE: \_\_\_\_\_

7. In what year were you born? *(Fill in blank.)*

\_\_\_\_\_ YEAR

8. Do you have any additional comments about the recreation facilities on **Parr Reservoir**? *(Please fill in blank and be as specific as possible.)*

---

---

---

---

---

---

---

**THANK YOU FOR YOUR HELP! WE APPRECIATE YOUR TIME TODAY!**